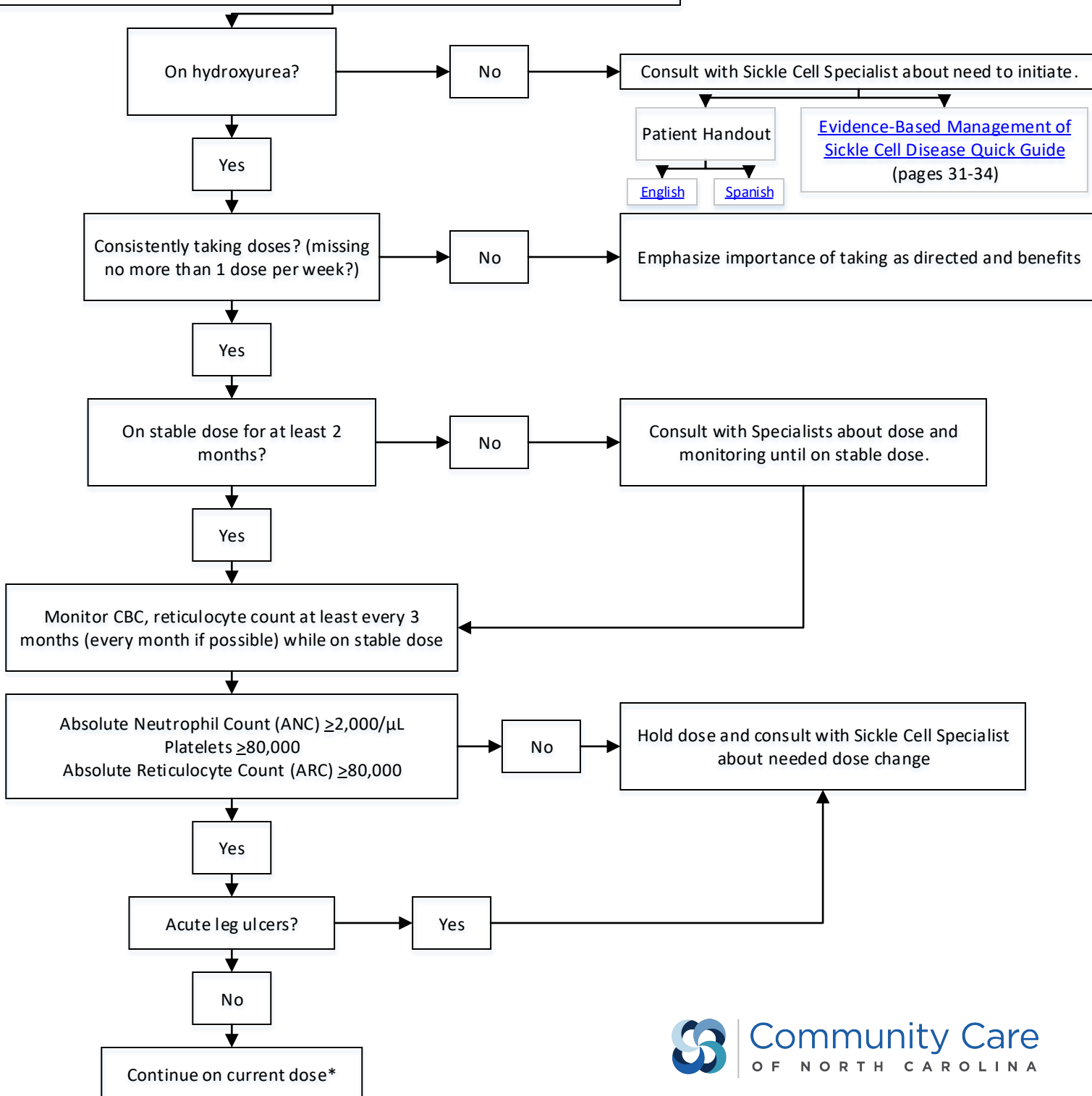


Co-managing Hydroxyurea* monitoring for Adult Patients with Sickle Cell Anemia

Adults 18 years and older with Sickle Cell Anemia (HbSS, HbSb0thal) and 3+ painful crises in 12 months. Sickle cell pain or severe symptomatic chronic anemia that interferes with daily activities or quality of life, or history of Acute Chest Syndrome.



***Hydroxyurea is a teratogen.** Reproductive Planning is very important. Discuss recommendation for Long Acting Reversible Contraceptive (LARC) for adolescent females if on Hydroxyurea. Progesterone-only contraception may be preferable. Current recommendation is to discontinue Hydroxyurea for men and women before a planned pregnancy and for women while breastfeeding.

Developed by Community Care of North Carolina, the NC Division of Public Health; the comprehensive sickle cell centers at Carolinas Health Care, Duke University, East Carolina University, University of North Carolina at Chapel Hill, Mission, and Wake Forest University; and primary care physicians from across NC. Adapted from the 2014 NIH/NIHBI guidelines for Evidence-Based Management of Sickle Cell Disease.